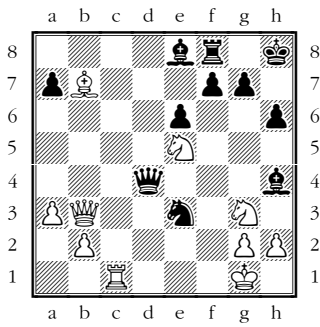


# Der beste Zug

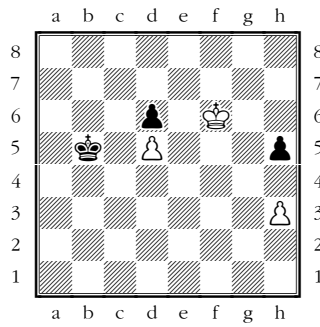
Weiss am Zug. Welcher der drei vorgeschlagenen Züge ist der Beste?

1



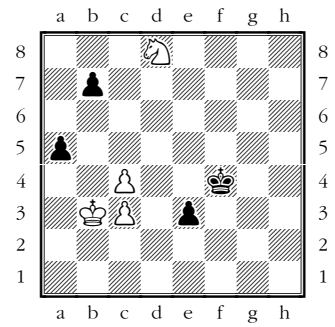
♖g6+  ♗f3  ♔h1

5



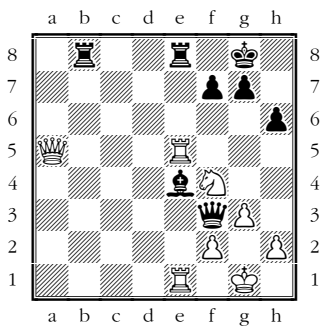
♔g5  h4  ♕e6

9



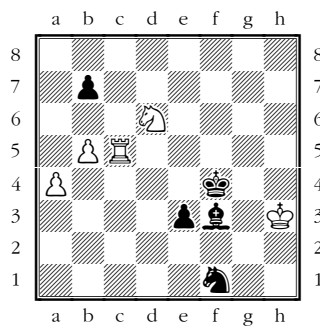
♔c2  ♗e6+  ♖xb7

2



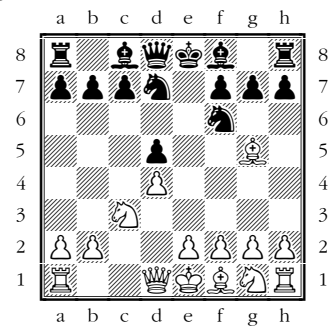
♖1xe4  ♜5xe4  ♔f1

6



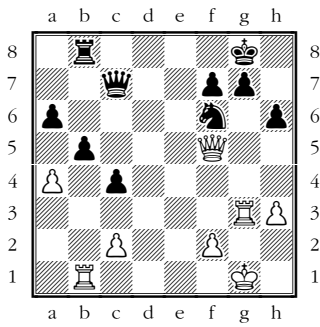
♜c1  a5  ♜f5

10



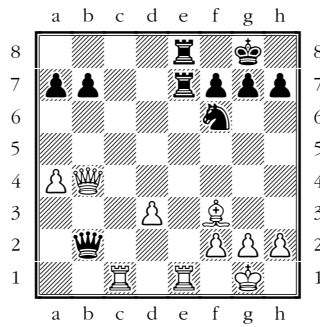
♗xd5  ♗f3  a3

3



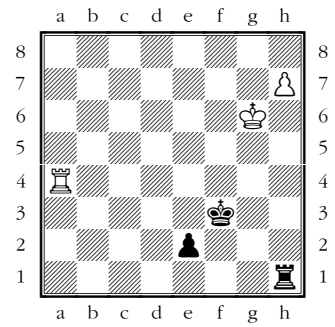
♔g2  axb5  ♚xf6

7



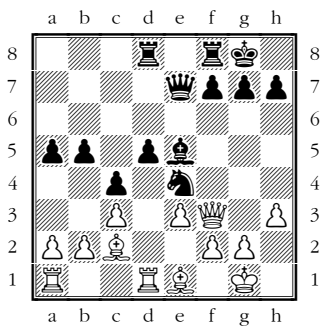
♚xe7  ♖b1  ♚xb2

11



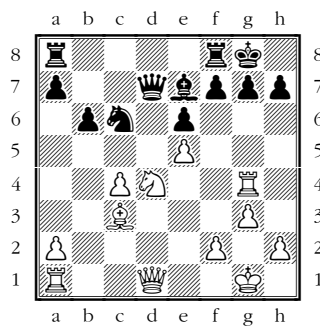
♔g7  ♖a1  ♖a3+

4



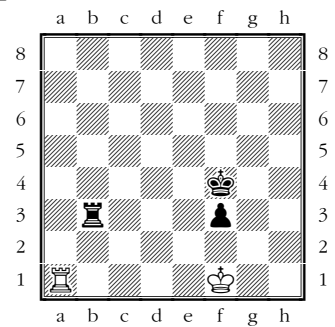
♖xd5  ♗xe4  ♚h5

8



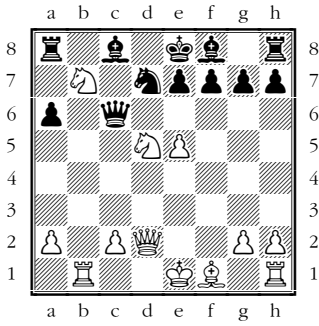
♗xc6  ♖xg7+  ♚a4

12



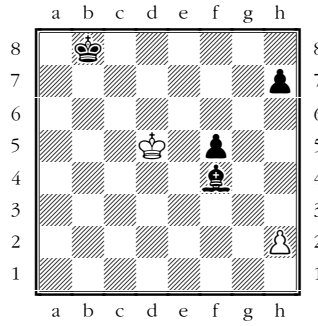
♖c1  ♖a8  ♔f2

13



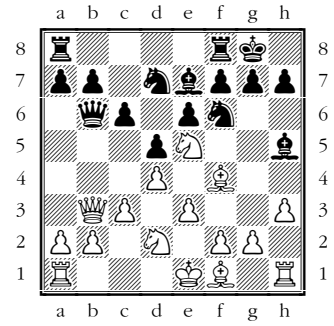
□ ♖xa6 □ ♘a5 □ ♜b6

17



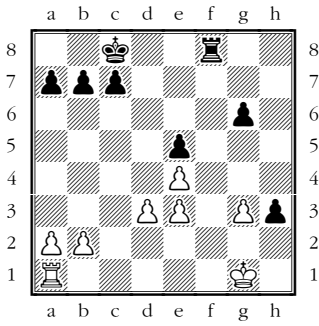
□ ♔e6 □ ♞h3 □ h4

21



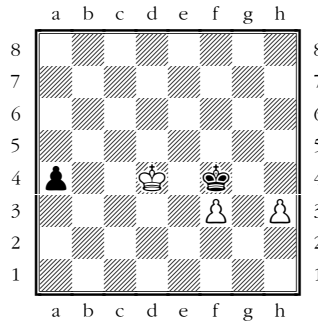
□ g4 □ ♔d3 □ a4

14



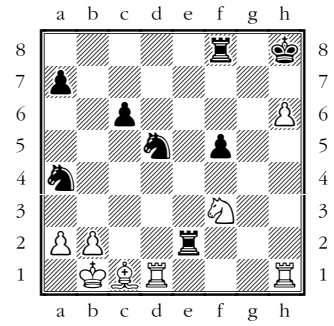
□ ♞f1 □ g4 □ ♔h1

18



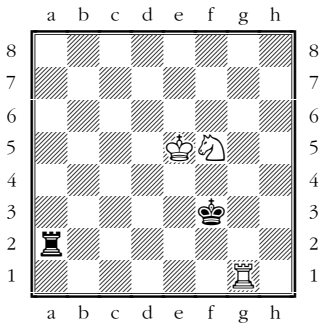
□ ♔c4 □ ♞h4 □ ♔c3

22



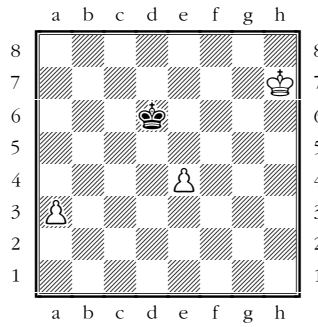
□ h7 □ ♞h4 □ ♔a1

15



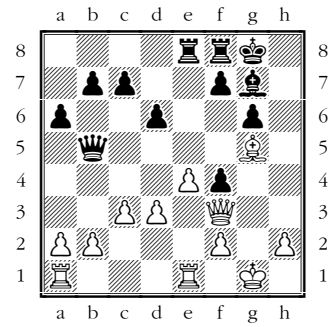
□ ♞g3+ □ ♘d4+ □ ♔h4+

19



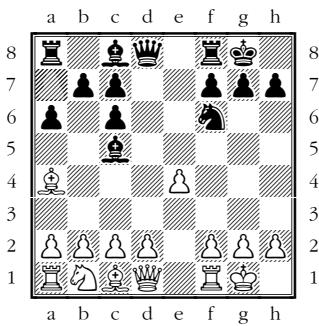
□ ♔g6 □ ♞g8 □ a4

23



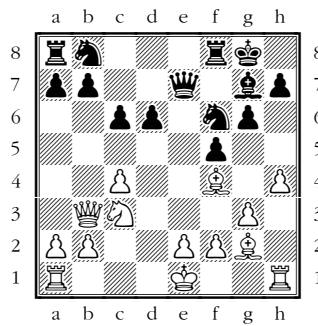
□ ♔xf4 □ a4 □ ♞xf4

16



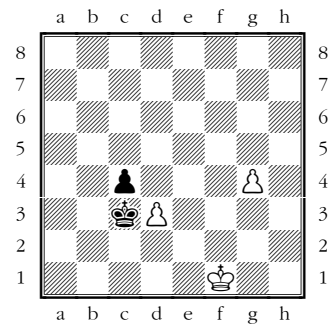
□ ♞e1 □ d3 □ c3

20



□ ♘h5 □ ♞e8 □ ♘a6

24



□ g5 □ dxc4 □ ♔e2

## Lösungen

- 1: 1.♖g6+? fxg6; 1.♗h1? ♖xe5] 1...♙a4 2.♗xd4 ♙xb3 3.♗xb3
- 2: 1.♖1xe4 [1.♖5xe4? ♖xe4; 1.♗f1? ♖b2 wird matt] 1...♖b1+ 2.♖e1
- 3: 1.axb5 [1.♗g2?! b4; 1.♖xf6? ♖xg3+ 2.fxg3 gxf6]
- 4: 1.♖xd5 [1.♙xe4? dxe4 2.♖xe4?? ♙h2+; 1.♖h5 g6] 1...♖xd5 2.♖xe4 (droht ♖xd5 und ♖xh7#)
- 5: 1.♗e6 [1.♗g5? ♗c5 2.♗xh5 ♗xd5=; 1.h4? ♗c4! 2.♗g5= (2.♗e6?? ♗c5-+)] 1...♗c5 2.h4+-
- 6: 1.♖f5# [1.♖c1? e2=; 1.a5? e2=]
- 7: 1.♖xe7 [1.♖xb2?? ♖xe1+ 2.♖xe1 ♖xe1#; 1.♖b1?? ♖xb4] 1...♖xc1 2.♖xe8+! +-
- 8: 1.♖xg7+ [1.♗xc6 ♖xc6≠; 1.♖a4 ♗xe5] 1...♗xg7 2.♗f5+ exf5 3.♖xd7 +-
- 9: 1.♗e6+ ♗f3 2.♗d4+ ♗f2 3.♗a4 e2 4.♗c2 e1♖ 5.♗xe1 ♗xe1 6.♗xa5= [1.♗xb7?? e2-+; 1.♗c2?? ♗g3-+]
- 10: 1.♗f3 [1.♗xd5?? ♗xd5 2.♙xd8 ♙b4+ 3.♖d2 ♙xd2+ 4.♗xd2 ♗xd8 -+; 1.a3?!]
- 11: 1.♖a3+ [1.♗g7? e1♖-+; 1.♖a1? ♖xa1 2.h8♖] 1...♗f2 (1...♗e4 2.♖a8) 2.♖a2 ♗f1 3.♖xe2 ♗xe2 4.♗g7 =
- 12: 1.♖a8 ♗g3 2.♖g8+ = [1.♖c1 ♗g3 -+; 1.♗f2 ♖b2+ 2.♗f1 ♗g3 -+]
- 13: 1.♖b6 ♗xb6 2.♗f6+ gxf6 3.♖d8# [1.♗a5?! ♖c5; 1.♙xa6? ♖xa6]
- 14: 1.g4 [1.♖f1?? h2 -+; 1.♗h1?! ♖f2]
- 15: 1.♗h4+ ♗f2 2.♖g2+ +- [1.♖g3+? ♗f2 =; 1.♗d4+ ? ♗f2 =]
- 16: 1.d3 [1.♖e1? ♙g4; 1.c3? ♗xe4]
- 17: 1.♗e6 ♙xh2 2.♗xf5 = (Schwarz hat den falschen Läufer) [1.h3?? oder 1.h4??; 1...♙c1 und 2...f4 -+]
- 18: 1.h4 ♗xf3 (1...a3 2.♗c3) 2.h5 +- [1.♗c4? oder 1.♗c3?; 1...♗xf3 =]
- 19: 1.a4 [1.♗g6? ♗e5 =; 1.♗g8? ♗e5 =] 1...♗e5 2.a5 +-
- 20: 1.♖e8 [1.♗h5 oder 1.♗a6: 1...♙xd6! 2.♖xd6?? c5+]
- 21: 1.g4 ♙g6 (1...♗xe5 2.dxe5 +-) 2.g5 ♗xe5 3.gxf6 gxf6 4.dxe5 +- [1.a4 ♗xe5=; 10.♙d3 ♗xe5=]
- 22: 1.♗a1 [1.h7? oder 1.♖h4?: 1...♗ac3+ -+]
- 23: 1.♙xf4 [1.a4? ♖xg5+; 1.♖xf4? f6 2.♙h4 g5 -+]
- 24: 1..dxc4 [1.g5?? cxd3 2.♗e1 ♗c2 -+; 1.♗e2? cxd3+ 2.♗d1 ♗d4 =] 1...♗xc4 2.♗g2 ♗d4 3.♗h3 ♗e5  
4.♗h4 ♗f6 5.♗h5 ♗g7 6.♗g5 +-]