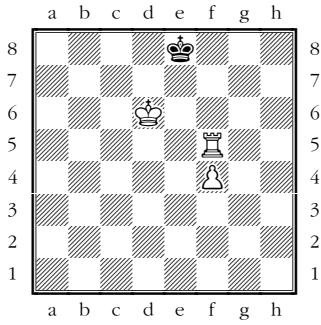


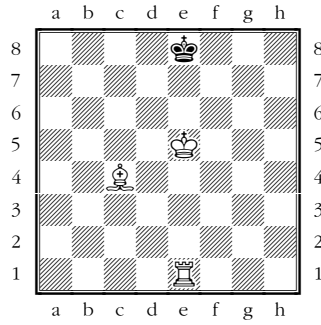
Matt in ...

Wieviele Züge braucht Weiss mindestens um matt zu setzen?

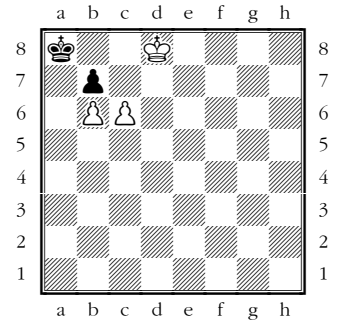
1



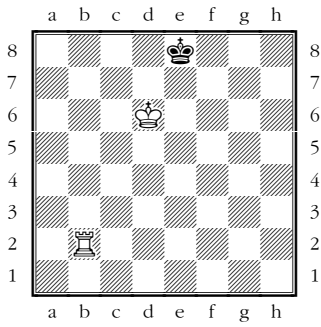
6



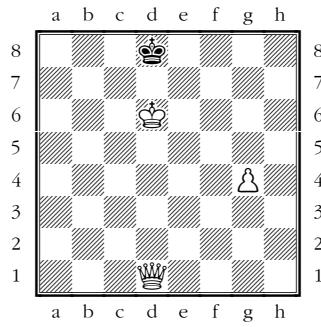
11



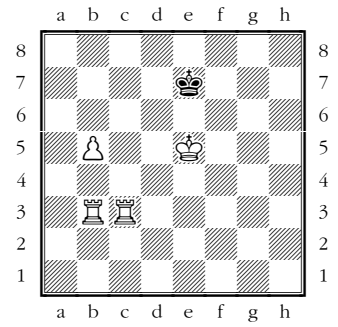
2



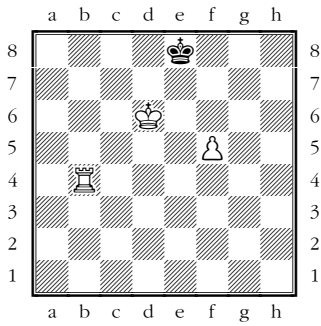
7



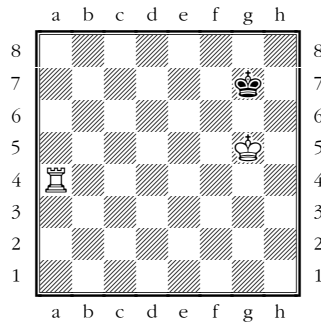
12



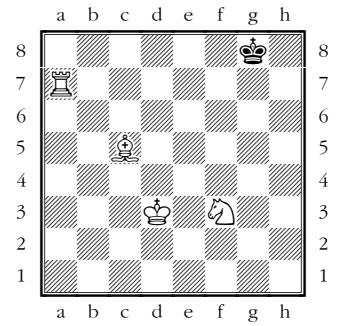
3



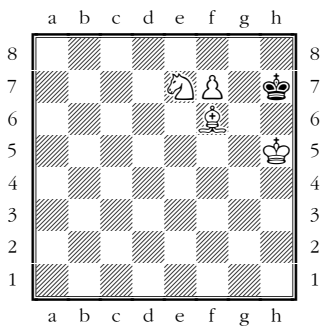
8



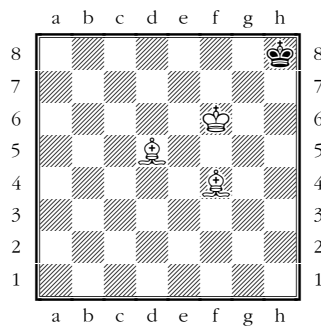
13



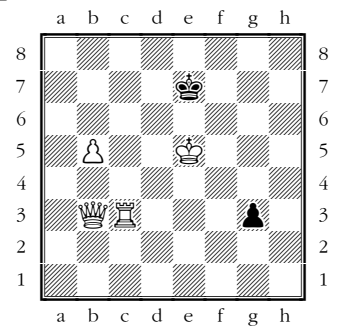
4



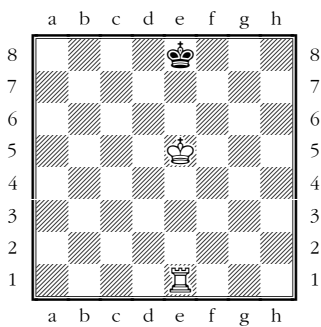
9



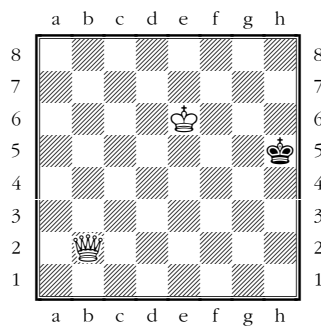
14



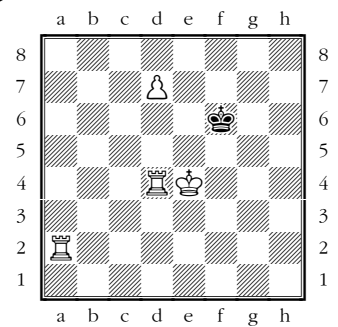
5



10



15



Lösungen

- 1: 2 Züge. 1. ♖f6 ♗d8 2. ♖f8#
- 2: 2 Züge. 1. ♖f2 ♗d8 2. ♖f8#
- 3: 3 Züge. 1. ♗e6 ♗f8 [1... ♗d8 2. ♖c4 ♗e8 3. ♖c8#] 2. ♖g4 ♗e8 3. ♖g8#
- 4: 1 Zug. 1. f8♖#
- 5: 3 Züge. 1. ♗e6 ♗d8 [1... ♗f8 2. ♖g1 ♗e8 3. ♖g8#] 2. ♖c1 ♗e8 3. ♖c8#
- 6: 3 Züge. 1. ♗d6+ ♗f8 2. ♖g1 ♗e8 3. ♖g8#
- 7: 2 Züge. 1. ♗a4 ♗c8 2. ♗a8# oder 1. ♗d5 ♗e8 [1... ♗c8 2. ♗a8#] 2. ♗g8#
- 8: 4 Züge. 1. ♖f4 ♗h8 [1... ♗h7 2. ♗f6 ♗g8 3. ♖h4 ♗f8 4. ♖h8#] 2. ♗h6 ♗g8 3. ♗g6 ♗h8 4. ♖f8#
- 9: 3 Züge. 1. ♗f7 ♗h7 2. ♗e4+ ♗h8 3. ♗e5#
- 10: 2 Züge. 1. ♗f5 ♗h6 [1... ♗h4 2. ♗h2#] 2. ♗h8#
- 11: 4 Züge. 1. ♗c7 bxc6 2. b7+ ♗a7 3. b8♗+ ♗a6 4. ♗b6#
- 12: 3 Züge. 1. ♖c8 ♗d7 [1... ♗f7 2. ♖g3 ♗e7 3. ♖g7#] 2. ♖bc3 ♗e7 3. ♖3c7#
- 13: 3 Züge. 1. ♗g5 ♗h8 2. ♗d4+ ♗g8 3. ♖a8#
- 14: 2 Züge. 1. ♖c8 ♗d7 [1... g2 2. ♗e6#] 2. ♗e6#
- 15: 3 Züge. 1. ♖d6+ ♗g5 [1... ♗e7 2. d8♗+ ♗f7 3. ♖a7#] 2. ♖h2 ♗g4 3. ♖g6#